

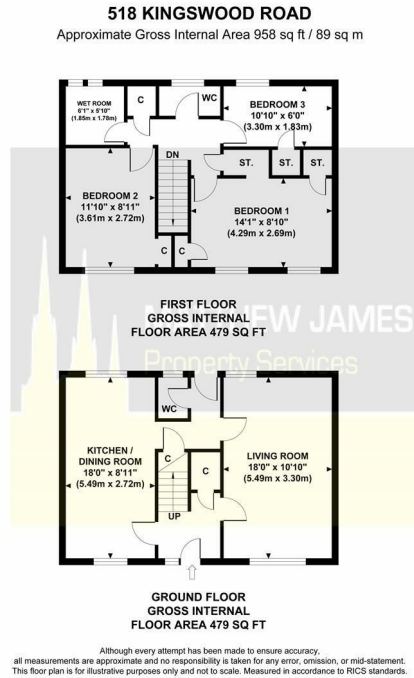
MATTHEW JAMES
Property Services



518 Kingswood Road, Nuneaton, CV10 8QQ
Offers Over £165,000



Floor Plan



Area Map



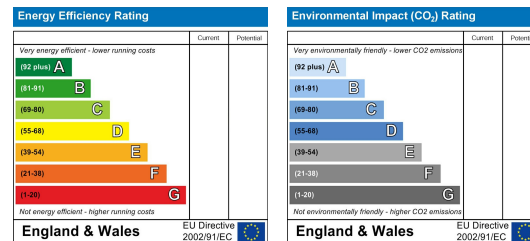
Accommodation

- *WELL PRESENTED MID-TERRACE HOME*
- *THREE BEDROOMS*
- *MODERN KITCHEN/DINING*
- *GROUND FLOOR W.C*
- *GARAGE*
- *LOW MAINTENANCE GARDEN*
- *IDEAL FOR FIRST TIME BUYERS*
- *LOVELY FAMILY HOME*
- *CONVENIENT LOCATION*
- *DECEPTIVE IN SIZE*

Viewing

Please contact us on 02477 170170 if you wish to arrange a viewing appointment for this property or require further information.

Energy Efficiency Graph



These particulars, whilst believed to be accurate are set out as a general outline only for guidance and do not constitute any part of an offer or contract. Intending purchasers should not rely on them as statements of representation of fact, but must satisfy themselves by inspection or otherwise as to their accuracy. No person in this firm's employment has the authority to make or give any representation or warranty in respect of the property.

CONTACT INFORMATION

📍 24a Warwick Row, Coventry CV1 1EY

☎ 02477 170170

✉ info@matthewjames.uk.com

🌐 www.matthewjames.uk.com

📘 Facebook

🐦 Twitter